



SHALLOW WHEEL-KIT INSTRUCTIONS

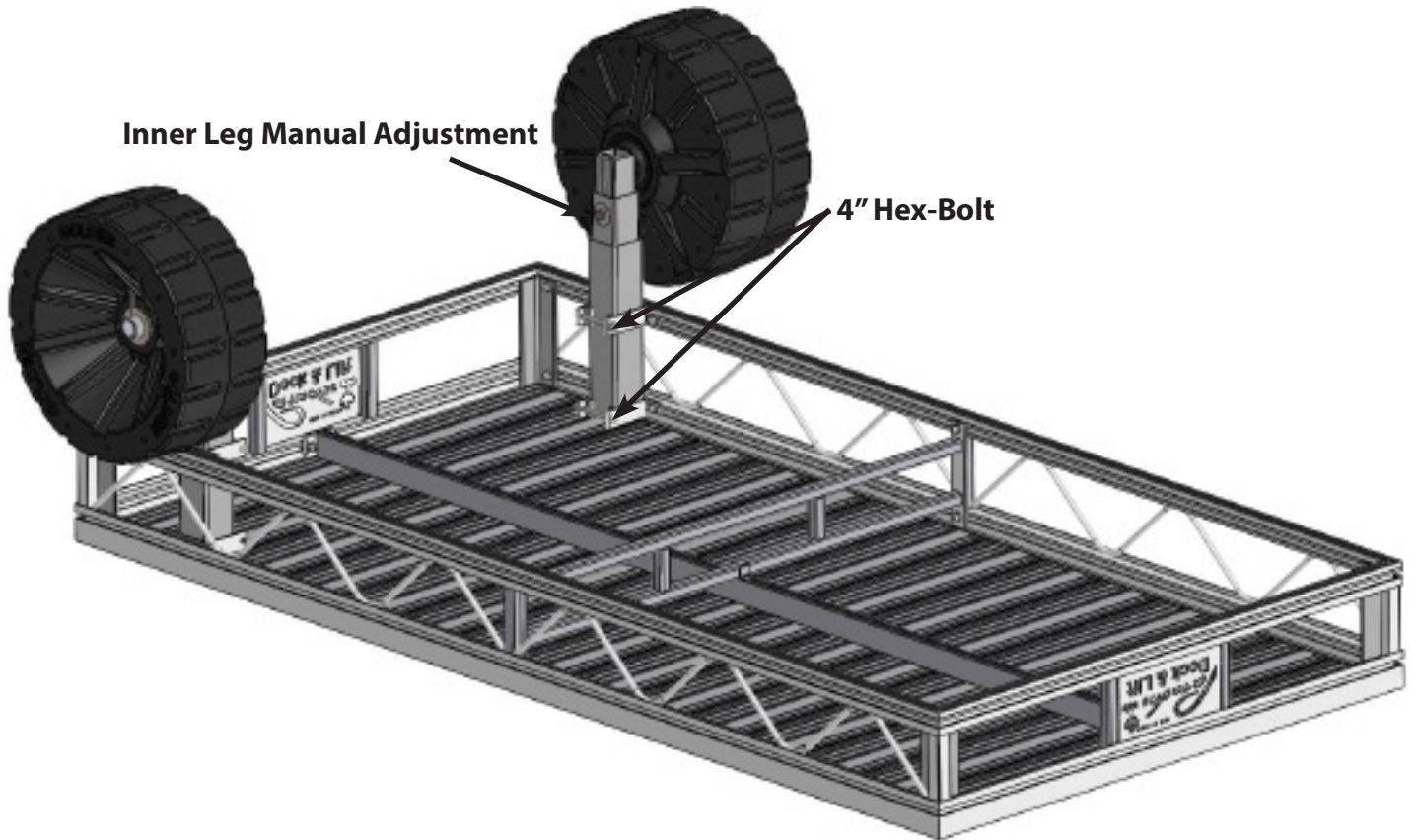


READ FIRST

- Do not step on the underside of the deck boards as it could result in the breaking of a deck clip.
- Never adjust the wheel kits with an impact wrench.
- Never use more than 15 ft/lbs of torque, using too much force will damage the mechanism.
- When using a cordless drill to extend or retract the legs make sure the clutch mode is engaged, failure to use the clutch might result in damage to yourself or the mechanism.

Manual Adjustment: 10"
Screw-Jack Adjustment: 8"
Total Adjustment: 18"

WHEEL KIT OVERVIEW

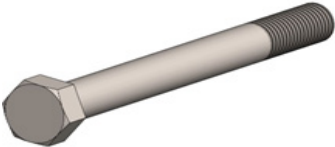


TOOLS REQUIRED

- **9/16" Wrench and Socket Driver.**
- **1 1/8" Socket & Cordless Drill.**
- **3/4" Wrench for adjusting manual set-screw**
- **7/32" Allan Key**
- **Carpenters Square**

HARDWARE & PARTS

A. Hex-Bolt 3/8" x 4"



x 4

F. Nylock 3/8"



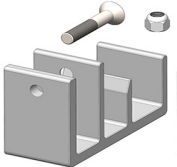
x 6

I. Wheel Washer & Clip



x 2

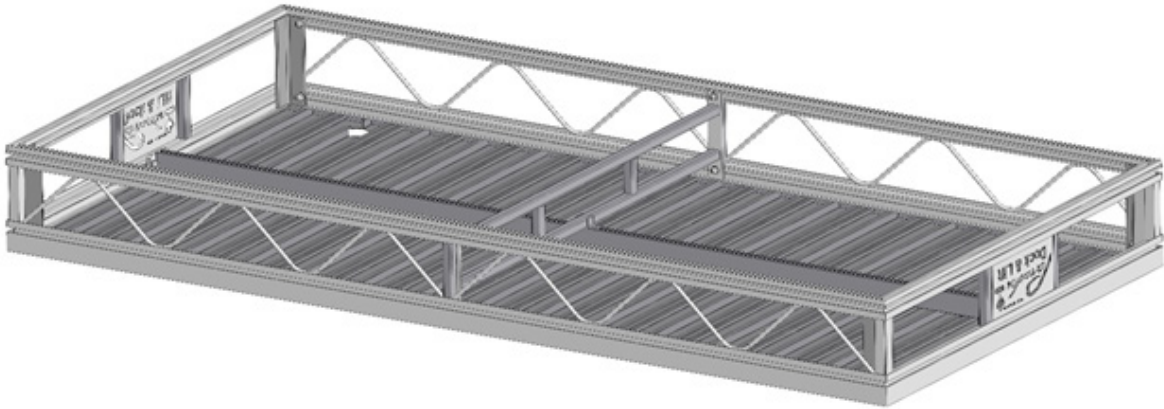
J. Dock Connector with countersunk bolt



x 2

STEP 1: Flip the dock upside down

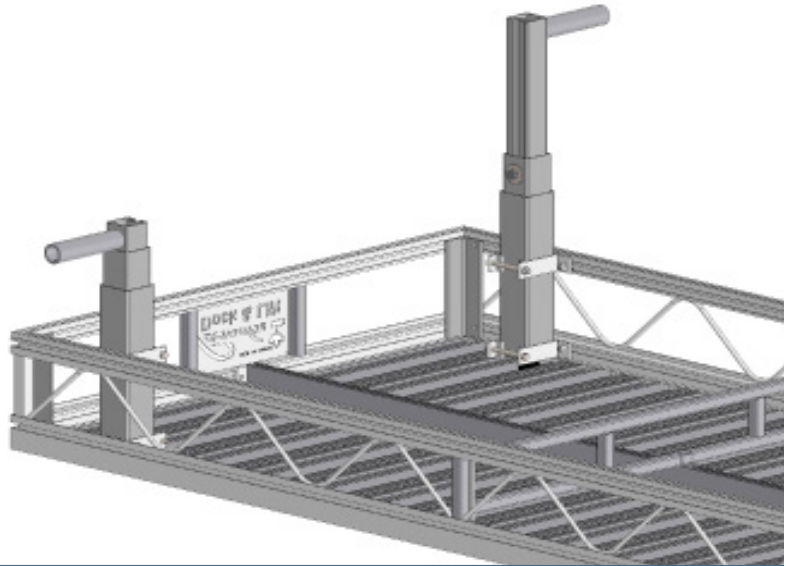
Flip dock upside down onto an even surface and block the corners, be careful there are no rocks or uneven obstacles that could damage the decking.



STEP 2: Insert Leg-Assembly

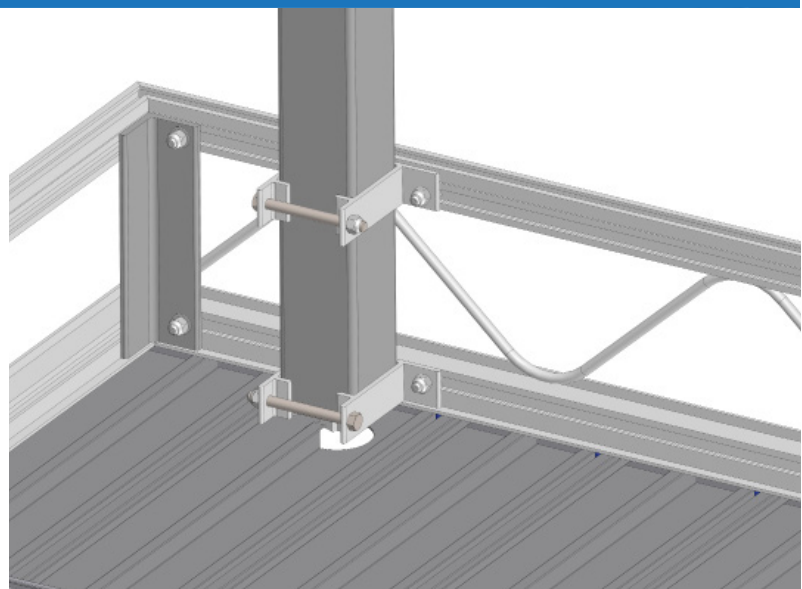
- Place the brace clamps on top of the leg clamps and slide the leg assembly through the brace clamps and into the leg clamps.
- Make sure the leg is slid all the way down and touching the lip of the upper extrusion

Note the proper positioning of the brace clamps as shown in the picture



STEP 3: Secure the Leg-Assembly

- Square the legs to the dock frame
- Install the (4) 3/8"x4" bolts through the leg clamp.
- Secure with (4) aluminum nylocks, tighten with a wrench.

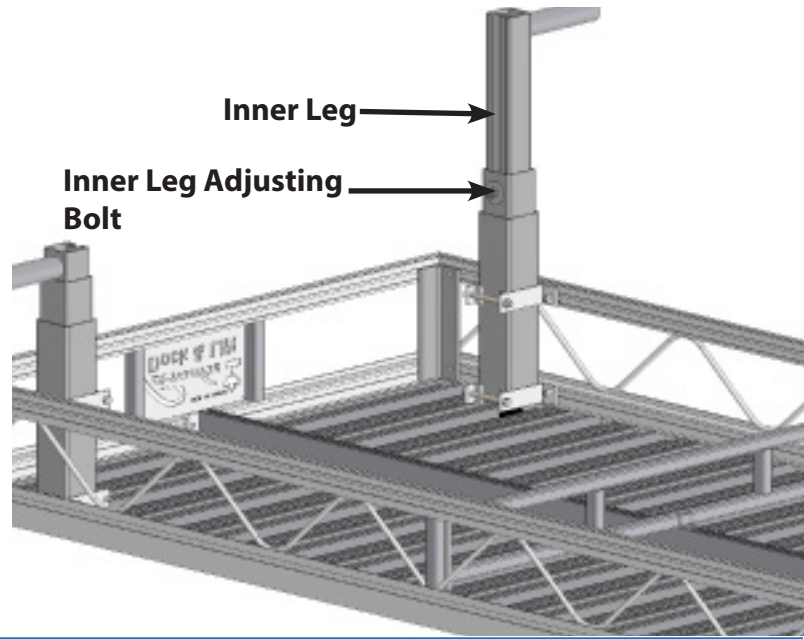


STEP 5: Adjust Inner Leg

- Loosen the Inner Leg adjusting bolt with a 3/4" wrench. Extend the leg to the appropriate length and tighten to 40 ft/lbs.

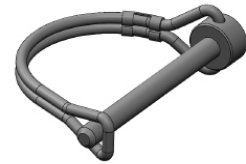
NEVER EXTEND THE LEG MORE THAN 13"

Water Depth:	Extend Inner Leg
13"-19"	2.5"
19"-25"	8"
25"-30"	13"



STEP 6: Install the Tires or Sandpads

- Slide the tire onto the axle, slide the washer onto the axle and secure in place with the safety pin.



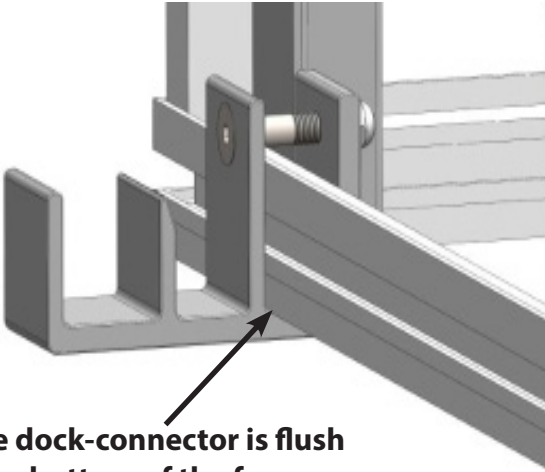
STEP 7: Flip Over & Install Dock-Connectors

- Flip the dock over and slide the dock connectors onto the bottom frame member, the connectors should be as far apart as possible.

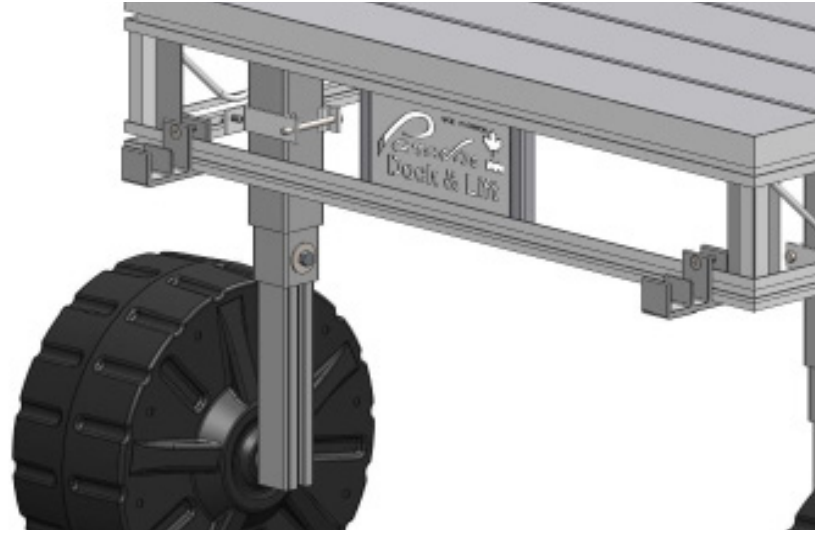


STEP 8: Secure Dock-Connectors

- Secure dock-connector with the 3/8"x2.25" countersunk bolts and aluminum nylock nuts.



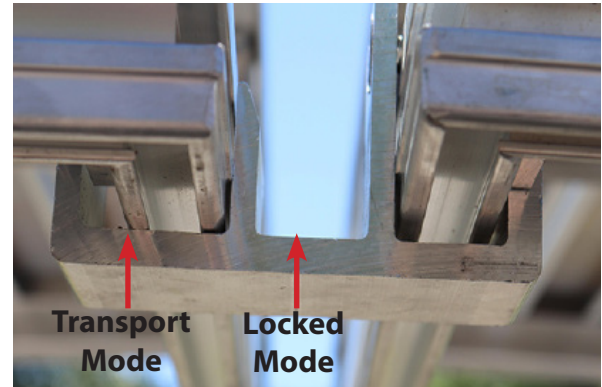
Make sure dock-connector is flush against the bottom of the frame.



INSTALLING & ADJUSTING

TRANSPORT MODES:

- When wheeling in multiple sections make sure the dock section is in the transport position. Once the docks are in position lift the section up and install in the locked position.



ROLLING-IN:

- When rolling-multiple sections together make sure all the sections are in the transport mode, this allows the sections to pivot when going across uneven terrain. Once in the final position lift the dock section up and place into the locked mode.

DOCK HEIGHT:

- We recommend setting the top of the dock at least 18" above the water. For rough lakes with high wave action and lots of boat traffic we suggest setting the top of the dock 24" above the water.



Clockwise to lower
Counterclockwise to raise



LEVELING DOCK:

- To adjust the dock you will need a 1 1/8" socket and a cordless drill. When extending or retracting the legs make sure the clutch mode is engaged, failure to use the clutch might result in damage to yourself or the mechanism. When leveling alternate between legs every 3-4" to prevent binding.

DRILL WILL COME TO A SUDDEN STOP WHEN LEG IS FULLY EXTENDED.

DO NOT USE MORE THAN 15 FT/LBS OF FORCE.

DOCK CAP:

- When finished insert the plastic dock cap into the hole to cover the adjusting nut.

